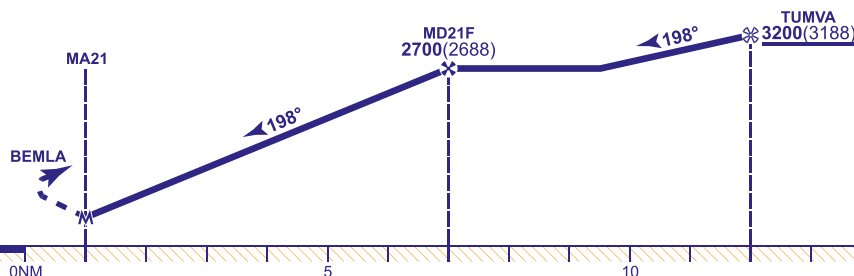


**LYDD**  
**RNP Y**  
**RWY 21**  
(ACFT CAT A,B)



**MAPt (LNAV): MA21**  
(1NM before THR RWY 21)

Turn right as soon as possible to **BEMLA** climbing to **3200** to join the hold at **ROMTI** or as directed by ATC. Remain clear of D044.



**NOTE** 1 FAT offset 14° from RWY 21 C/L.  
2 DME I-LDY will read zero at THR RWY 21.  
3 MAX speed for procedure 160KIAS.  
4 A/C to remain clear of EGD141 on approach and EGD044 on MAP.

AD 2-EGMD-8-3